

RP - Sanjiv Goenka
Group



Head Office

CESC House, Chowringhee Square, Kolkata - 700 001

Phn No. : +91 33 2225 6040 - 49


Website : www.cesc.co.in



Email: cesclimited@rpsg.in

Helpline: 1912 / 4403 1912 / 3501 1912 / 1860 500 1912

 **CESCLtd**

 **cesc_limited**

 **CESCLimited**

 **@cesclimited5277**



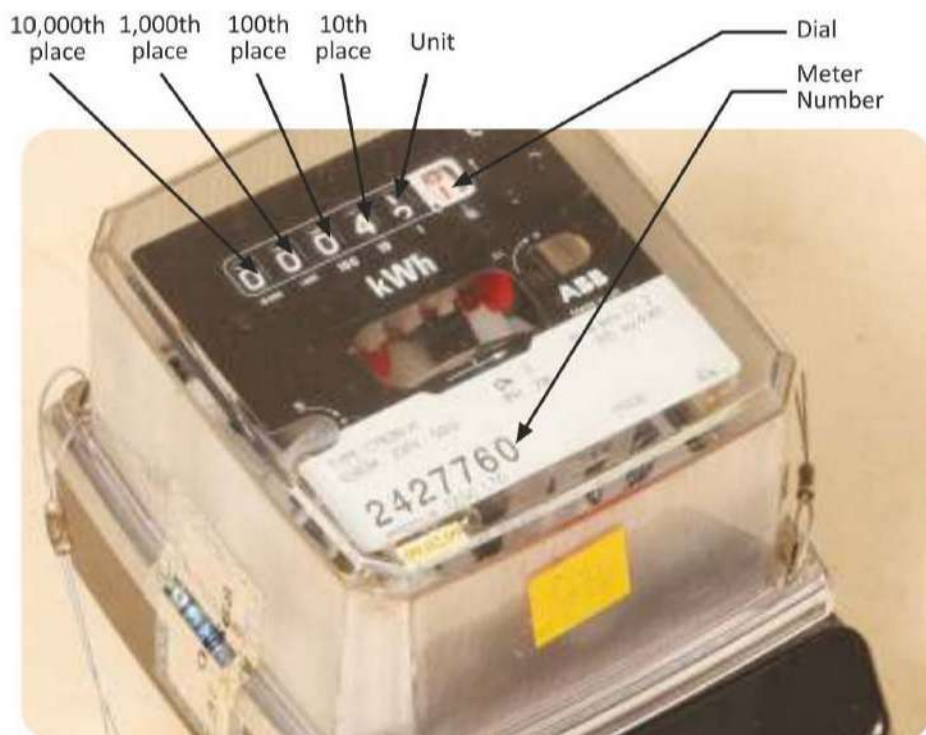
Your electricity meter records the number of units of electricity you have consumed. These units are measured in "Kilowatt-hours" (i.e. kWh). You may find it useful to maintain a daily/weekly/monthly record of your electricity consumption. Reading your meter accurately helps you to budget for your electricity bill. We assure you that your electricity meter is accurate as it is a precision instrument, which is checked to the standards as outlined by the statutory authorities. Just as in the functioning of the mileage indicator of your car, when the total number of electricity units recorded crosses 99999, the meter starts again at zero.

We have two types of meters, viz., Electromechanical and Static/Digital.

ELECTROMECHANICAL METERS WITH CYCLO - DIAL

The number of units you consume is displayed in the electromechanical display panel.

Electromechanical Single Phase Meters



Electromechanical Three-Phase Meters



ELECTROMECHANICAL METER WITH POINTER DIAL

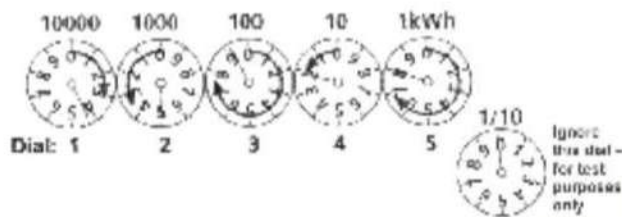
Reading this type of meter may appear to be more complicated, but by following these suggestions you will find that it is simple and straightforward.

Reading the dials of electromechanical meters ...

- ✿ Always write down the number the pointer has passed. This is not necessarily the nearest number to the pointer. For example, if the pointer is anywhere between 4 and 5, write down 4.
- ✿ If the pointer is directly over a figure, say 5, write down that figure and underline it : 5
- ✿ The example meter reading shown below will be 45928 But this reading **requires adjusting for better accuracy**.

Look at the illustration below ...

If one of these is followed by a 9, reduce the underlined figure by 1.





The correct readings will be 4 4 9 2 8

🔦 **Dial 1.** Pointer has passed 4, so the reading is 4

🔦 **Dial 2.** Pointer is directly over 5, so write down 5 and underline it

🔦 **Dial 3.** Pointer has passed 9, so the reading is 9

🔦 **Dial 4.** Pointer has passed 2, so the reading is 2

🔦 **Dial 5.** Pointer is directly over 8, so write down 8 and underline it.

Remember...

Before you read your dial meter, check the direction of your dials. This may not be exactly like those in the example shown here.

Every dial on every meter revolves from 0 through 1 and on to 9 before continuing back to 0.

STATIC / DIGITAL METERS

This is the latest form of meters which displays the number of units consumed in the display panel.

